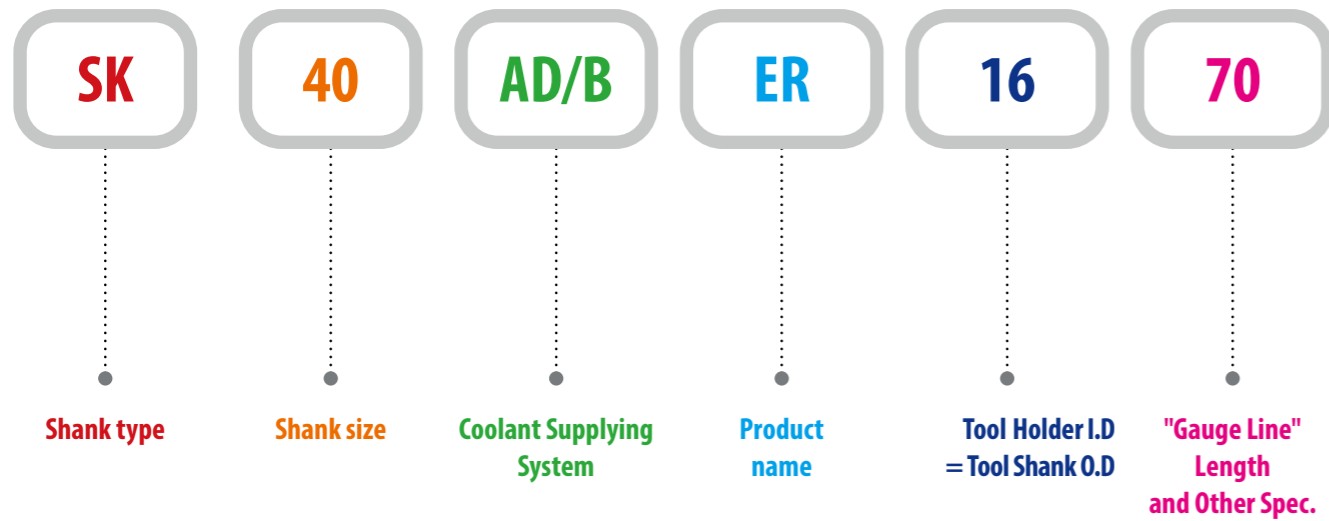


YE-BT23



BEST OF TOOLING SYSTEM



MODEL NUMBERING SYSTEM & SURFACE FINISH
Model Numbering System

Surface Finish

BEST OF TOOLING SYSTEM LIST
HYDRAULIC CHUCK

Click/Touch each image (page number) and move to the very page!

Series	HCP			HC			
Type	POWER E-HYDRO			SLIM			
Standard	SK DIN 69871	HSK ISO 12164-1 DIN 69893	BT JIS B6339 MAS 403	SK DIN 69871	HSK ISO 12164-1 DIN 69893	BT JIS B6339 MAS 403	CBT BT DUAL CONTACT
Page	08			09			
Tool Holder							

Series	HCR			HMC		
Type	RADIAL TOOL LENGTH PRE-SETTING TYPE			MOULD & DIE		
Standard	SK DIN 69871	HSK ISO 12164-1 DIN 69893	BT JIS B6339 MAS 403	SK DIN 69871	HSK ISO 12164-1 DIN 69893	BT JIS B6339 MAS 403
Page	10			10		
Tool Holder						

Series	HCS	HF	HK	HS
Type	HYDRAULIC CHUCK SET	REDUCTION SLEEVE COOLANT FLUSH TYPE	REDUCTION SLEEVE OPEN TYPE	REDUCTION SLEEVE CLOSED TYPE
Page	11	11	12	
Tool Holder				

Guide Line to Icons

Standard of Tools	Taper Accuracy	G Value	RPM	Run-Out	Coolant System

BEST OF TOOLING SYSTEM LIST

SHRINK FIT HOLDER

Click/Touch each image(page number) and move to the very page!

Series	SFH						
Type	SHRINK FIT HOLDER (COOLANT CHANNEL)			SHRINK FIT HOLDER			
Standard	SK DIN 69871	HSK ISO 12164-1 DIN 69893	BT JIS B6339 MAS 403	SK DIN 69871	HSK ISO 12164-1 DIN 69893	BT JIS B6339 MAS 403	CBT BT DUAL CONTACT
Page	13		14	14	15		16
Tool Holder							

Series	SFHS			SFH
Type	EXTRA SLIM			EXTENSION
Standard	SK DIN 69871	HSK ISO 12164-1 DIN 69893	BT JIS B6339 MAS 403	ST STRAIGHT
Page	16		17	17
Tool Holder				

ER COLLET CHUCK

Series	ER					
Type	ER COLLET CHUCK					
Standard	SK DIN 69871	HSK ISO 12164-1 DIN 69893	BT JIS B6339 MAS 403	CBT BT DUAL CONTACT	K STRAIGHT (SLIM TYPE)	NC for CNC LATHE
Page	17-18	18-19	19-20	20		
Tool Holder						

Series	UF	ERHP	GER	RDTC	PART	SP	SP
Type	ER COLLET - UF	ER COLLET HIGH PRECISION	ER COLLET GER HIGH PRECISION	TAP ER COLLET DIN	ER NUT	ER SPANNER / WRENCH (for ER NUT)	ER SPANNER / WRENCH (for ER Mini NUT)
Page	21-22	22-23	23-24	24	25		
Tool Holder							

BEST OF TOOLING SYSTEM LIST

END MILL HOLDER & SIDE LOCK ARBOR

Click/Touch each image(page number) and move to the very page!

Series	EMH					
Type	END MILL HOLDER			END MILL HOLDER - SPRAY NOZZLE TYPE		
Standard	SK DIN 69871	HSK ISO 12164-1 DIN 69893	BT JIS B6339 MAS 403	SK DIN 69871	HSK ISO 12164-1 DIN 69893	BT JIS B6339 MAS 403
Page	25-26		26-27	27	28	
Tool Holder						

Series	SLA	
Type	SIDE LOCK ARBOR	
Standard	BT JIS B6339 MAS 403	CBT BT DUAL CONTACT
Page	28	29
Tool Holder		

POWER MILLING CHUCK

Series	C				
Type	POWER MILLING CHUCK			HIGH SPEED	MILLING CHUCK SET
Standard	SK DIN 69871	HSK ISO 12164-1 DIN 69893	BT JIS B6339 MAS 403	SK DIN 69871	
Page	29				30
Tool Holder					

Series	K	SP
Type	POWER MILLING CHUCK COLLET	SPANNER for MILLING CHUCK
Page	30	
Tool Holder		

BEST OF TOOLING SYSTEM LIST

SHELL MILL ARBOR

Click/Touch each image(page number) and move to the very page!

Series	SMA				CMA	
Type	SHELL MILL ARBOR (COOLANT CHANNEL)				COMBI-SHELL MILL ARBOR	
Standard	SK DIN 69871	HSK ISO 12164-1 DIN 69893	BT JIS B6339 MAS 403	CBT BT DUAL CONTACT	SK DIN 69871	BT JIS B6339 MAS 403
Page	30	31		32	32	33
Tool Holder						

SYNCHRO TAPPING CHUCK

Series	SYTER				SYTC
Type	ERTYPE				QUICK CHANGE TYPE
Standard	SK DIN 69871	HSK ISO 12164-1 DIN 69893	BT JIS B6339 MAS 403	KW STRAIGHT	SK DIN 69871
Page	33			34	34
Tool Holder					

TAPPING ER CHUCK

Series	TER
Type	TAPPING ER CHUCK
Standard	SK DIN 69871
Page	34
Tool Holder	

BEST OF TOOLING SYSTEM LIST

TAPPING CHUCK

Click/Touch each image(page number) and move to the very page!

Series	TC			TAP ADAPTER DIN
Type	TAPPING CHUCK			
Standard	SK DIN 69871	HSK ISO 12164-1 DIN 69893	BT JIS B6339 MAS 403	
Page	35			
Tool Holder				

NC DRILL CHUCK

Series	NPU
Type	NC DRILL CHUCK
Standard	K STRAIGHT
Page	35
Tool Holder	

MORSE TAPER ARBOR

Series	MTA		
Type	MORSE TAPER ARBOR		
Standard	SK DIN 69871	HSK ISO 12164-1 DIN 69893	BT JIS B6339 MAS 403
Page	36		
Tool Holder			

ACCESSORY & OTHERS

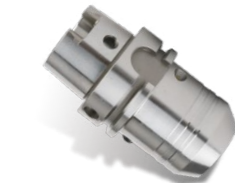
Series	PSB	CT
Type	PULL STUD BOLT	COOLANT TUBE
Page	36	
Tool Holder		

HYDRAULIC CHUCK POWER E-HYDRO HCP
HYDRAULIC CHUCK POWER E-HYDRO HCP
SK - DIN 69871
BT - JIS B6339/MAS 403


TAPER No.	MODEL No.	EDP No.	PRICE
40	SK40AD/B-HC12P-50 G2.5	P2776651P	
	SK40AD/B-HC20P-64.5 G2.5	P2534001P	
50	SK50AD/B-HC20P-64.5 G2.5	P2756010P	
	SK50AD/B-HC32P-81 G2.5	P2534002P	



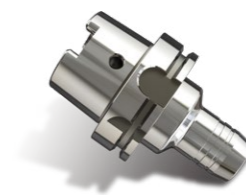
TAPER No.	MODEL No.	EDP No.	PRICE
30	BT30-HC20P-90 G2.5	P2776602P	
40	BT40AD/B-HC12P-58 G2.5	P2776601P	
	BT40AD/B-HC20P-72.5 G2.5	P2554001P	
50	BT50AD/B-HC20P-83.5 G2.5	P2755010P	
	BT50AD/B-HC32P-90 G2.5	P2558001P	

HSK FORM A - ISO 12164-1/DIN 69893


TAPER No.	MODEL No.	EDP No.	PRICE
63A	HSK63A-HC12P-80 G2.5	P2770302P	
	HSK63A-HC20P-80 G2.5	P2770301P	
100A	HSK100A-HC20P-90 G2.5	P2770303P	
	HSK100A-HC32P-100 G2.5	P2770304P	

HYDRAULIC CHUCK SLIM HC
HYDRAULIC CHUCK SLIM HC
SK - DIN 69871
HSK FORM A & F - ISO 12164-1/DIN 69893


TAPER No.	MODEL No.	EDP No.	PRICE	
40	SK40AD/B-HC6-80.5 G2.5	P2554017		
	SK40AD/B-HC6-110 G2.5	P2554016		
	SK40AD/B-HC8-80.5 G2.5	P2554025		
	SK40AD/B-HC10-80.5 G2.5	P2554004		
	SK40AD/B-HC10-110 G2.5	P2554009		
	SK40AD/B-HC12-80.5 G2.5	P2554011		
	SK40AD/B-HC12-110 G2.5	P2554010		
	SK40AD/B-HC16-80.5 G2.5	P2554013		
	SK40AD/B-HC16-110 G2.5	P2554012		
	SK40AD/B-HC20-80.5 G2.5	P2554015		
	SK40AD/B-HC20-110 G2.5	P2554014		
	SK40AD/B-HC25-80.5 G2.5	P2770103		
	50	SK50AD/B-HC10-80.5 G2.5	P2770106	
		SK50AD/B-HC12-80.5 G2.5	P2770118	
SK50AD/B-HC16-80.5 G2.5		P2770108		
SK50AD/B-HC20-80.5 G2.5		P2770119		



TAPER No.	MODEL No.	EDP No.	PRICE
63A	HSK63A-HC6-70 G2.5	P2567001	
	HSK63A-HC8-70 G2.5	P2567002	
	HSK63A-HC10-80 G2.5	P2567003	
	HSK63A-HC12-85 G2.5	P2567004	
	HSK63A-HC14-85 G2.5	P2567005	
	HSK63A-HC16-90 G2.5	P2567006	
	HSK63A-HC18-90 G2.5	P2567007	
	HSK63A-HC20-90 G2.5	P2567008	
	HSK63A-HC25-120 G2.5	P2567009	
63F	HSK63F-HC20-85 G2.5	P2770461	
100A	HSK100A-HC20-105 G2.5	P2757010	
	HSK100A-HC32-110 G2.5	P2757020	

BT - JIS B6339/MAS 403
CBT (BT DUAL CONTACT)


TAPER No.	MODEL No.	EDP No.	PRICE
40	BT40AD/B-HC6-90 G2.5	P2554003	
	BT40AD/B-HC8-90 G2.5	P2554021	
	BT40AD/B-HC10-90 G2.5	P2554005	
	BT40AD/B-HC12-90 G2.5	P2554002	
	BT40AD/B-HC16-90 G2.5	P2554006	
	BT40AD/B-HC20-90 G2.5	P2554007	
	BT40AD/B-HC25-100 G2.5	P2770641	
	BT40AD/B-HC32-105 G2.5	P2770612	



TAPER No.	MODEL No.	EDP No.	PRICE
40	CBT40-HC12-90 G2.5	P2770501	
	CBT40-HC20-90 G2.5	P2770502	

HYDRAULIC CHUCK RADIAL TOOL LENGTH PRE-SETTING TYPE **HCR**
SK - DIN 69871


TAPER No.	MODEL No.	EDP No.	PRICE
40	SK40AD/B-HCR12-80.5 G2.5	P2554018	
	SK40AD/B-HCR20-80.5 G2.5	P2554019	

HSK FORM A - ISO 12164-1/DIN 69893


TAPER No.	MODEL No.	EDP No.	PRICE
63A	HSK63A-HCR12-90 G2.5	P2567011	
	HSK63A-HCR20-100 G2.5	P2567012	
	HSK63A-HCR6-80 G2.5	P2770205	
100A	HSK100A-HCR32-120 G2.5	P2770231	

BT - JIS B6339/MAS 403


TAPER No.	MODEL No.	EDP No.	PRICE
40	BT40AD/B-HCR20-90 G2.5	P2554008	

HYDRAULIC CHUCK For MOULD & DIE **HMC**
SK - DIN 69871


TAPER No.	MODEL No.	EDP No.	PRICE
40	SK40AD/B-HMC6-120 G2.5	P2770701	
	SK40AD/B-HMC6-150 G2.5	P2770702	
	SK40AD/B-HMC8-120 G2.5	P2770703	
	SK40AD/B-HMC8-150 G2.5	P2770704	
	SK40AD/B-HMC10-120 G2.5	P2770705	
	SK40AD/B-HMC10-150 G2.5	P2770706	
	SK40AD/B-HMC12-120 G2.5	P2770707	
	SK40AD/B-HMC12-150 G2.5	P2770708	
	SK40AD/B-HMC20-120 G2.5	P2770711	
	SK40AD/B-HMC20-150 G2.5	P2770712	

HSK FORM A - ISO 12164-1/DIN 69893


TAPER No.	MODEL No.	EDP No.	PRICE
63A	HSK63A-HMC6-145 G2.5	P2770801	
	HSK63A-HMC8-145 G2.5	P2770802	
	HSK63A-HMC10-145 G2.5	P2770803	
	HSK63A-HMC12-145 G2.5	P2770804	
	HSK63A-HMC20-145 G2.5	P2770806	
100A	HSK100A-HMC12-150 G2.5	P2770809	

BT - JIS B6339/MAS 403


TAPER No.	MODEL No.	EDP No.	PRICE
40	BT40AD/B-HMC6-120 G2.5	P2770903	
	BT40AD/B-HMC8-150 G2.5	P2770906	
	BT40AD/B-HMC12-120 G2.5	P2770901	
	BT40AD/B-HMC20-150 G2.5	P2770912	

HYDRAULIC CHUCK SET **HCS**


MODEL No.	COMPONENTS	EDP No.	PRICE
HCSS40	SK40AD/B-HC20P-64.5	P2770971	
	HK20-6.8.10.12.16 (5pcs)		
HCSH40	HSK63A-HC20P-80	P2770973	
	HK20-6.8.10.12.16 (5pcs)		
HCSB40	BT40AD/B-HC20P-72.5	P2770972	
	HK20-6.8.10.12.16 (5pcs)		

REDUCTION SLEEVE COOLANT FLUSH TYPE **HF**


MODEL No.	EDP No.	PRICE
HF12-3	P2771201	
HF12-4	P2771202	
HF12-5	P2771203	
HF12-6	P2771204	
HF12-7	P2771205	
HF12-8	P2771206	
HF20-3	P2771207	
HF20-4	P2771208	
HF20-5	P2771209	
HF20-6	P2771210	
HF20-7	P2771211	
HF20-8	P2771212	
HF20-9	P2771213	
HF20-10	P2771214	
HF20-11	P2771215	
HF20-12	P2771216	
HF20-13	P2771217	
HF20-14	P2771218	
HF20-15	P2771219	
HF20-16	P2771220	
HF32-6	P2771221	
HF32-8	P2771222	
HF32-10	P2771223	
HF32-12	P2771224	
HF32-14	P2771225	
HF32-16	P2771226	
HF32-18	P2771227	
HF32-20	P2771228	
HF32-25	P2771229	

▶ Other special sizes of Hydraulic Chuck collets could be produced and supplied.

Chucking Method

Please assemble cutting tool with collet first, and then insert collet into Hydraulic Chuck

REDUCTION SLEEVE OPEN TYPE
HK

REDUCTION SLEEVE CLOSED TYPE
HS


MODEL No.	EDP No.	PRICE
HK12-3	P2569022	
HK12-4	P2569023	
HK12-5	P2569024	
HK12-6	P2569025	
HK12-8	P2569026	
HK20-3	P2569001	
HK20-4	P2569002	
HK20-5	P2569003	
HK20-6	P2569004	
HK20-8	P2569005	
HK20-10	P2569006	
HK20-12	P2569007	
HK20-13	P2771005	
HK20-14	P2569008	
HK20-16	P2569009	
HK32-6	P2569010	
HK32-8	P2569011	
HK32-10	P2569012	
HK32-12	P2569013	
HK32-14	P2569014	
HK32-16	P2569015	
HK32-18	P2569016	
HK32-20	P2569017	
HK32-25	P2569018	

► Other special sizes of Hydraulic Chuck collets could be produced and supplied.

MODEL No.	EDP No.	PRICE
HS12-3	P2771101	
HS12-4	P2771102	
HS12-5	P2771103	
HS12-6	P2771104	
HS12-8	P2771106	
HS20-10	P2771114	
HS20-11	P2771115	
HS20-12	P2771116	
HS20-13	P2771117	
HS20-3	P2771107	
HS20-4	P2771108	
HS20-5	P2771109	
HS20-6	P2771110	
HS20-7	P2771111	
HS20-8	P2771112	
HS20-9	P2771113	
HS20-14	P2771118	
HS20-15	P2771119	
HS20-16	P2771120	
HS20-17	P2771130	
HS32-6	P2771121	
HS32-8	P2771122	
HS32-10	P2771123	
HS32-12	P2771124	
HS32-14	P2771125	
HS32-16	P2771126	
HS32-18	P2771127	
HS32-20	P2771128	
HS32-25	P2771129	

► Other special sizes of Hydraulic Chuck collets could be produced and supplied.

SHRINK FIT HOLDER (COOLANT CHANNEL)
SFH
SK - DIN 69871


TAPER No.	MODEL No.	EDP No.	PRICE	
40	SK40AD/B-SFH6C-160 G2.5	P2801302C		
	SK40AD/B-SFH6C-80 G2.5	P2801301C		
	SK40AD/B-SFH8C-160 G2.5	P2801304C		
	SK40AD/B-SFH8C-80 G2.5	P2801303C		
	SK40AD/B-SFH10C-160 G2.5	P2801306C		
	SK40AD/B-SFH10C-80 G2.5	P2801305C		
	SK40AD/B-SFH12C-160 G2.5	P2801308C		
	SK40AD/B-SFH12C-80 G2.5	P2801307C		
	SK40AD/B-SFH16C-160 G2.5	P2801312C		
	SK40AD/B-SFH16C-80 G2.5	P2801311C		
	SK40AD/B-SFH20C-160 G2.5	P2801316C		
	SK40AD/B-SFH20C-80 G2.5	P2801315C		
	SK40AD/B-SFH25C-160 G2.5	P2801318C		
	SK40AD/B-SFH25C-90 G2.5	P2801317C		
	50	SK50AD/B-SFH6C-160 G2.5	P2801320C	
		SK50AD/B-SFH6C-80 G2.5	P2801319C	
SK50AD/B-SFH8C-160 G2.5		P2801322C		
SK50AD/B-SFH8C-80 G2.5		P2801321C		
SK50AD/B-SFH10C-160 G2.5		P2801324C		
SK50AD/B-SFH10C-80 G2.5		P2801323C		
SK50AD/B-SFH12C-160 G2.5		P2801326C		
SK50AD/B-SFH12C-80 G2.5		P2801325C		
SK50AD/B-SFH16C-160 G2.5		P2801330C		
SK50AD/B-SFH16C-80 G2.5		P2801329C		
SK50AD/B-SFH20C-160 G2.5		P2801334C		
SK50AD/B-SFH20C-80 G2.5		P2801333C		
SK50AD/B-SFH25C-160 G2.5		P2801336C		
SK50AD/B-SFH25C-90 G2.5		P2801335C		

SHRINK FIT HOLDER (COOLANT CHANNEL)
SFH
HSK FORM A - ISO 12164-1/DIN 69893


TAPER No.	MODEL No.	EDP No.	PRICE
63A	HSK63A-SFH6C-160 G2.5	P2862014C	
	HSK63A-SFH6C-80 G2.5	P2862013C	
	HSK63A-SFH8C-160 G2.5	P2862016C	
	HSK63A-SFH8C-80 G2.5	P2862015C	
	HSK63A-SFH10C-160 G2.5	P2862018C	
	HSK63A-SFH10C-85 G2.5	P2862017C	
	HSK63A-SFH12C-160 G2.5	P2862020C	
	HSK63A-SFH12C-90 G2.5	P2862019C	
	HSK63A-SFH16C-160 G2.5	P2862024C	
	HSK63A-SFH16C-95 G2.5	P2862023C	
	HSK63A-SFH20C-100 G2.5	P2862027C	
	HSK63A-SFH20C-160 G2.5	P2862028C	
	HSK63A-SFH25C-115 G2.5	P2862029C	
	HSK63A-SFH25C-160 G2.5	P2862030C	
100A	HSK100A-SFH6C-160 G2.5	P2862032C	
	HSK100A-SFH6C-85 G2.5	P2862031C	
	HSK100A-SFH8C-160 G2.5	P2862034C	
	HSK100A-SFH8C-85 G2.5	P2862033C	
	HSK100A-SFH10C-90 G2.5	P2862035C	
	HSK100A-SFH12C-160 G2.5	P2862038C	
	HSK100A-SFH12C-95 G2.5	P2862037C	
	HSK100A-SFH16C-100 G2.5	P2862041C	
	HSK100A-SFH16C-160 G2.5	P2862042C	
	HSK100A-SFH20C-100 G2.5	P2862045C	
	HSK100A-SFH20C-160 G2.5	P2862046C	
	HSK100A-SFH25C-115 G2.5	P2862047C	
	HSK100A-SFH25C-160 G2.5	P2862048C	

Chucking Method Please assemble cutting tool with collet first, and then insert collet into Hydraulic Chuck

SHRINK FIT HOLDER (COOLANT CHANNEL) SFH
SHRINK FIT HOLDER SFH
SHRINK FIT HOLDER SFH
SHRINK FIT HOLDER SFH
BT - JIS B6339/MAS 403
SK - DIN 69871
HSK FORM A - ISO 12164-1/DIN 69893
BT - JIS B6339/MAS 403


TAPER No.	MODEL No.	EDP No.	PRICE
40	BT40AD/B-SFH6C-160 G2.5	P2862086C	
	BT40AD/B-SFH6C-90 G2.5	P2862085C	
	BT40AD/B-SFH8C-160 G2.5	P2862088C	
	BT40AD/B-SFH8C-90 G2.5	P2862087C	
	BT40AD/B-SFH10C-160 G2.5	P2862090C	
	BT40AD/B-SFH10C-90 G2.5	P2862089C	
	BT40AD/B-SFH12C-160 G2.5	P2862092C	
	BT40AD/B-SFH12C-90 G2.5	P2862091C	
	BT40AD/B-SFH14C-160 G2.5	P2862094C	
	BT40AD/B-SFH14C-90 G2.5	P2862093C	
	BT40AD/B-SFH16C-160 G2.5	P2862096C	
	BT40AD/B-SFH16C-90 G2.5	P2862095C	
	BT40AD/B-SFH18C-90 G2.5	P2862097C	
	BT40AD/B-SFH20C-160 G2.5	P2862100C	
	BT40AD/B-SFH20C-90 G2.5	P2862099C	
	BT40AD/B-SFH25C-100 G2.5	P2862101C	
BT40AD/B-SFH25C-160 G2.5	P2862102C		
50	BT50AD/B-SFH6C-100 G2.5	P2862103C	
	BT50AD/B-SFH6C-160 G2.5	P2862104C	
	BT50AD/B-SFH8C-100 G2.5	P2862105C	
	BT50AD/B-SFH8C-160 G2.5	P2862106C	
	BT50AD/B-SFH10C-100 G2.5	P2862107C	
	BT50AD/B-SFH10C-160 G2.5	P2862108C	
	BT50AD/B-SFH12C-100 G2.5	P2862109C	
	BT50AD/B-SFH12C-160 G2.5	P2862110C	
	BT50AD/B-SFH16C-100 G2.5	P2862113C	
	BT50AD/B-SFH16C-160 G2.5	P2862114C	

TAPER No.	MODEL No.	EDP No.	PRICE	
40	SK40AD/B-SFH10-120 G2.5	P2554051		
	SK40AD/B-SFH10-160 G2.5	P2771306		
	SK40AD/B-SFH10-80 G2.5	P2554052		
	SK40AD/B-SFH12-160 G2.5	P2771307		
	SK40AD/B-SFH12-80 G2.5	P2600008		
	SK40AD/B-SFH16-160 G2.5	P2554053		
	SK40AD/B-SFH16-80 G2.5	P2554054		
	SK40AD/B-SFH18-80 G2.5	P2771321		
	SK40AD/B-SFH20-160 G2.5	P2554055		
	SK40AD/B-SFH20-80 G2.5	P2554056		
	SK40AD/B-SFH25-160 G2.5	P2771324		
	SK40AD/B-SFH25-90 G2.5	P2771323		
	SK40AD/B-SFH3-80 G2.5	P2771301		
	SK40AD/B-SFH4-80 G2.5	P2771302		
	SK40AD/B-SFH5-80 G2.5	P2771303		
	SK40AD/B-SFH6-120	P2554057		
	SK40AD/B-SFH6-160 G2.5	P2771304		
	SK40AD/B-SFH6-80 G2.5	P2554058		
	SK40AD/B-SFH8-160 G2.5	P2771305		
	SK40AD/B-SFH8-80 G2.5	P2600009		
	50	SK50AD/B-SFH10-80 G2.5	P2761010	
		SK50AD/B-SFH12-160 G2.5	P2762015	
		SK50AD/B-SFH12-80 G2.5	P2762010	
		SK50AD/B-SFH16-160 G2.5	P2764015	
SK50AD/B-SFH16-80 G2.5		P2764010		
SK50AD/B-SFH5-80 G2.5		P2771327		
SK50AD/B-SFH6-80 G2.5		P2771328		
SK50AD/B-SFH8-160 G2.5		P2760015		
SK50AD/B-SFH8-80 G2.5	P2760010			

▶ Without balancing screw.

TAPER No.	MODEL No.	EDP No.	PRICE	
63A	HSK63A-SFH3-80 G2.5	P2771401		
	HSK63A-SFH4-80 G2.5	P2771402		
	HSK63A-SFH6-120 G2.5	P2565056		
	HSK63A-SFH6-160 G2.5	P2771404		
	HSK63A-SFH6-80 G2.5	P2565057		
	HSK63A-SFH8-160 G2.5	P2771405		
	HSK63A-SFH8-80 G2.5	P2600007		
	HSK63A-SFH10-120 G2.5	P2565051		
	HSK63A-SFH10-160 G2.5	P2771406		
	HSK63A-SFH10-85 G2.5	P2565052		
	HSK63A-SFH12-120 G2.5	P2771486		
	HSK63A-SFH12-160 G2.5	P2771407		
	HSK63A-SFH14-90 G2.5	P2771454		
	HSK63A-SFH12-90 G2.5	P2600003		
	HSK63A-SFH16-160 G2.5	P2565053		
	HSK63A-SFH16-95 G2.5	P2565054		
	HSK63A-SFH20-100 G2.5	P2600005		
	HSK63A-SFH20-160 G2.5	P2565055		
	HSK63A-SFH25-115 G2.5	P2771458		
	HSK63A-SFH25-160 G2.5	P2771459		
	100A	HSK100A-SFH4-85 G2.5	P2771470	
		HSK100A-SFH6-160 G2.5	P2771472	
		HSK100A-SFH6-85 G2.5	P2777301	
		HSK100A-SFH8-160 G2.5	P2771473	
HSK100A-SFH8-85 G2.5		P2777302		
HSK100A-SFH10-90 G2.5		P2777303		
HSK100A-SFH12-160 G2.5		P2771475		
HSK100A-SFH12-95 G2.5		P2777304		
HSK100A-SFH16-100 G2.5		P2771478		
HSK100A-SFH16-160 G2.5		P2771479		
HSK100A-SFH20-100 G2.5	P2771482			
HSK100A-SFH20-160 G2.5	P2771483			
HSK100A-SFH25-115 G2.5	P2771484			
HSK100A-SFH25-160 G2.5	P2771485			

▶ Without balancing screw.

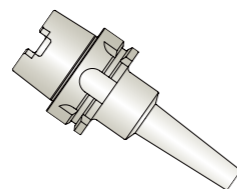
SHRINK FIT HOLDER
SFH
CBT (BT DUAL CONTACT)


TAPER No.	MODEL No.	EDP No.	PRICE
30	CBT30-SFH4-80 G2.5	P2771563	
	CBT30-SFH6-80 G2.5	P2771561	
	CBT30-SFH8-80 G2.5	P2771554	
	CBT30-SFH10-80 G2.5	P2771510	
	CBT30-SFH12-80 G2.5	P2771511	
	CBT30-SFH14-80 G2.5	P2771512	
	CBT30-SFH20-80 G2.5	P2771562	

▶ Without balancing screw.

SHRINK FIT HOLDER EXTRA SLIM
SFHS
SK - DIN 69871


TAPER No.	MODEL No.	EDP No.	PRICE
40	SK40AD/B-SFHS3-95 G2.5	P2771338S	
	SK40AD/B-SFHS3-120 G2.5	P2771339S	
	SK40AD/B-SFHS4-95 G2.5	P2771340S	
	SK40AD/B-SFHS4-120 G2.5	P2771341S	
	SK40AD/B-SFHS6-95 G2.5	P2771342S	
	SK40AD/B-SFHS6-120 G2.5	P2771343S	
	SK40AD/B-SFHS8-95 G2.5	P2771344S	
	SK40AD/B-SFHS8-120 G2.5	P2771345S	
	SK40AD/B-SFHS10-95 G2.5	P2771346S	
	SK40AD/B-SFHS10-120 G2.5	P2771347S	
	SK40AD/B-SFHS12-95 G2.5	P2771348S	
	SK40AD/B-SFHS12-120 G2.5	P2771349S	

HSK FORM A - ISO 12164-1/DIN 69893


TAPER No.	MODEL No.	EDP No.	PRICE
63A	HSK63A-SFHS4-95 G2.5	P2779819S	
	HSK63A-SFHS4-120 G2.5	P2779820S	
	HSK63A-SFHS6-95 G2.5	P2779821S	
	HSK63A-SFHS6-120 G2.5	P2779822S	
	HSK63A-SFHS8-95 G2.5	P2779823S	
	HSK63A-SFHS8-160 G2.5	P2779824S	
	HSK63A-SFHS10-95 G2.5	P2779825S	
	HSK63A-SFHS10-160 G2.5	P2779826S	
	HSK63A-SFHS12-95 G2.5	P2779827S	
HSK63A-SFHS12-160 G2.5	P2779828S		

SHRINK FIT HOLDER EXTRA SLIM
SFHS
BT - JIS B6339/MAS 403


TAPER No.	MODEL No.	EDP No.	PRICE
40	BT40AD/B-SFHS3-95 G2.5	P2779860S	
	BT40AD/B-SFHS3-120 G2.5	P2779861S	
	BT40AD/B-SFHS4-95 G2.5	P2779863S	
	BT40AD/B-SFHS4-120 G2.5	P2779864S	
	BT40AD/B-SFHS6-95 G2.5	P2779866S	
	BT40AD/B-SFHS6-120 G2.5	P2779867S	
	BT40AD/B-SFHS6-160 G2.5	P2779868S	
	BT40AD/B-SFHS8-95 G2.5	P2779869S	
	BT40AD/B-SFHS8-120 G2.5	P2779870S	
	BT40AD/B-SFHS8-160 G2.5	P2779871S	
	BT40AD/B-SFHS10-95 G2.5	P2779872S	
	BT40AD/B-SFHS10-120 G2.5	P2779873S	
	BT40AD/B-SFHS12-95 G2.5	P2779875S	
	BT40AD/B-SFHS12-120 G2.5	P2779876S	

SHRINK FIT HOLDER EXTENSION
SFH
ST - STRAIGHT


TAPER No.	MODEL No.	EDP No.	PRICE
ST12	ST12-SFH6-160	P2767030	
ST16	ST16-SFH8-120	P2771711	
ST20	ST20-SFH3-160	P2767210	
	ST20-SFH4-160	P2767215	
	ST20-SFH5-160	P2771708	
	ST20-SFH6-160	P2767220	
	ST20-SFH8-160	P2767225	
	ST20-SFH10-160	P2767230	
	ST20-SFH12-160	P2767235	

ER COLLET CHUCK
ER
SK - DIN 69871


TAPER No.	MODEL No.	EDP No.	PRICE	
40	SK40AD/B-ER11-70 G2.5	P2774812		
	SK40AD/B-ER11-100 G2.5	P2774826		
	SK40AD/B-ER16-70 G2.5	P2774801		
	SK40AD/B-ER16-100 G2.5	P2774804		
	SK40AD/B-ER16-160 G2.5	P2774828		
	SK40AD/B-ER20-70 G2.5	P2774813		
	SK40AD/B-ER20-100 G2.5	P2774820		
	SK40AD/B-ER25-70 G2.5	P2774802		
	SK40AD/B-ER25-100 G2.5	P2774805		
	SK40AD/B-ER32-70 G2.5	P2774803		
	SK40AD/B-ER32-100 G2.5	P2774806		
	SK40AD/B-ER40-80 G2.5	P2774814		
	50	SK50AD/B-ER16-70 G2.5	P2774815	
		SK50AD/B-ER20-70 G2.5	P2774816	
SK50AD/B-ER20-100 G2.5		P2774822		
SK50AD/B-ER25-70 G2.5		P2774817		
SK50AD/B-ER25-100 G2.5		P2774823		
SK50AD/B-ER32-70 G2.5		P2774818		
	SK50AD/B-ER32-100 G2.5	P2774824		
	SK50AD/B-ER40-80 G2.5	P2774819		

ER COLLET CHUCK
ER
SK - DIN 69871


TAPER No.	MODEL No.	EDP No.	PRICE	
40	SK40-ER11-70 G6.3	P2527006		
	SK40-ER16-100 G6.3	P2527018		
	SK40-ER16-160 G6.3	P2527029		
	SK40-ER16-70 G6.3	P2776417		
	SK40-ER20-100 G6.3	P2527019		
	SK40-ER20-70 G6.3	P2776418		
	SK40-ER25-100 G6.3	P2776429		
	SK40-ER25-70 G6.3	P2776419		
	SK40-ER32-100 G6.3	P2776430		
	SK40-ER32-70 G6.3	P2776420		
	SK40-ER40-100 G6.3	P2527036		
	SK40-ER40-80 G6.3	P2527011		
	50	SK50-ER16-70 G6.3	P2527012	
		SK50-ER25-100 G6.3	P2527024	
SK50-ER25-160 G6.3		P2527044		
SK50-ER25-70 G6.3		P2776424		
SK50-ER32-100 G6.3		P2527025		
SK50-ER32-160 G6.3		P2527046		
SK50-ER32-70 G6.3	P2776425			

SK - DIN 69871


TAPER No.	MODEL No.	EDP No.	PRICE
40	SK40AD/B-ER16-70 G6.3	P2537033	
	SK40AD/B-ER16-100 G6.3	P2537017	
	SK40AD/B-ER20-70 G6.3	P2537034	
	SK40AD/B-ER20-100 G6.3	P2537018	
	SK40AD/B-ER25-70 G6.3	P2537009	
	SK40AD/B-ER25-100 G6.3	P2537019	
	SK40AD/B-ER32-70 G6.3	P2537032	
	SK40AD/B-ER32-100 G6.3	P2537020	
	SK40AD/B-ER40-80 G6.3	P2537011	
	50	SK50AD/B-ER25-70 G6.3	P2600030
SK50AD/B-ER25-100 G6.3		P2537023	
SK50AD/B-ER32-70 G6.3		P2537035	
SK50AD/B-ER32-100 G6.3		P2537024	

ER COLLET CHUCK
ER
HSK FORM A - ISO 12164-1/DIN 69893


TAPER No.	MODEL No.	EDP No.	PRICE
50A	HSK50A-ER32-100 G2.5	P2774941	
63A	HSK63A-ER16-100 G2.5	P2774901	
	HSK63A-ER20-100 G2.5	P2774942	
	HSK63A-ER25-100 G2.5	P2774902	
	HSK63A-ER32-100 G2.5	P2774903	
	HSK63A-ER40-120 G2.5	P2774904	
	100A	HSK100A-ER16-100 G2.5	P2774905
HSK100A-ER20-100 G2.5		P2774946	
HSK100A-ER25-100 G2.5		P2774906	
HSK100A-ER32-100 G2.5		P2774907	
HSK100A-ER40-120 G2.5		P2774947	

HSK FORM A - ISO 12164-1/DIN 69893


TAPER No.	MODEL No.	EDP No.	PRICE
63A	HSK63A-ER16-100 G6.3	P2564001	
	HSK63A-ER25-100 G6.3	P2564002	
	HSK63A-ER32-100 G6.3	P2564003	
	HSK63A-ER40-120 G6.3	P2564004	
80A	HSK80A-ER32-100 G6.3	P2771934	
100A	HSK100A-ER25-100 G6.3	P2564012	
	HSK100A-ER32-100 G6.3	P2564013	

ER COLLET CHUCK
ER
HSK FORM E - ISO 12164-1/DIN 69893


TAPER No.	MODEL No.	EDP No.	PRICE
32E	HSK32E-ER16-60 G6.3	P2771919	

BT - JIS B6339/MAS 403


TAPER No.	MODEL No.	EDP No.	PRICE
30	BT30-ER25-70 G2.5	P2776509A	
	BT30-ER32-60 G2.5	P2776511A	
40	BT40AD/B-ER11-100 G2.5	P2776514	
	BT40AD/B-ER11-75 G2.5	P2776513	
	BT40AD/B-ER16-75 G2.5	P2776504	
	BT40AD/B-ER16-100 G2.5	P2553021	
	BT40AD/B-ER16-120 G2.5	P2776515	
	BT40AD/B-ER20-75 G2.5	P2776516	
	BT40AD/B-ER20-100 G2.5	P2553017	
	BT40AD/B-ER25-75 G2.5	P2600012	
	BT40AD/B-ER25-100 G2.5	P2553018	
	BT40AD/B-ER25-150 G2.5	P2776519	
50	BT40AD/B-ER32-60 G2.5	P2553501	
	BT40AD/B-ER32-100 G2.5	P2776505	
	BT40AD/B-ER40-80 G2.5	P2553004	
	BT50AD/B-ER16-100 G2.5	P2776522	
	BT50AD/B-ER20-100 G2.5	P2776525	
50	BT50AD/B-ER25-100 G2.5	P2776528	
	BT50AD/B-ER32-100 G2.5	P2600026	

ER COLLET CHUCK
ER
BT - JIS B6339/MAS 403


TAPER No.	MODEL No.	EDP No.	PRICE
30	BT30-ER16-100 G6.3	P2772110	
	BT30-ER20-100 G6.3	P2772112	
	BT30-ER20-80 G6.3	P2772111	
	BT30-ER32-60 G6.3	P2772144	
	BT30-ER32-90 G6.3	P2772115	
40	BT40-ER11-75 G6.3	P2772116	
	BT40-ER16-100 G6.3	P2772118	
	BT40-ER16-120 G6.3	P2772119	
	BT40-ER16-75 G6.3	P2772101	
	BT40-ER20-100 G6.3	P2772120	
	BT40-ER20-75 G6.3	P2772102	
	BT40-ER25-100 G6.3	P2772122	
	BT40-ER25-135 G6.3	P2772123	
	BT40-ER25-150 G6.3	P2772124	
	BT40-ER25-75 G6.3	P2772103	
	BT40-ER32-60 G6.3	P2772104	
	BT40-ER32-100 G6.3	P2772125	
	BT40-ER32-120 G6.3	P2772105	
	BT40-ER32-150 G6.3	P2772126	
	BT40-ER40-80 G6.3	P2772127	

BT - JIS B6339/MAS 403


TAPER No.	MODEL No.	EDP No.	PRICE
50	BT50-ER16-100 G6.3	P2772128	
	BT50-ER16-165 G6.3	P2772130	
	BT50-ER20-135 G6.3	P2772132	
	BT50-ER25-100 G6.3	P2772134	
	BT50-ER25-165 G6.3	P2772136	
	BT50-ER32-100 G6.3	P2772137	
	BT50-ER32-165 G6.3	P2772139	
	BT50-ER40-100 G6.3	P2772140	
	BT50-ER40-150 G6.3	P2772141	

ER COLLET CHUCK
ER
EXTENSION ER COLLET CHUCK
ER
BT - JIS B6339/MAS 403


TAPER No.	MODEL No.	EDP No.	PRICE
40	BT40AD/B-ER32-100 G6.3	P2776564	

NC- for CNC LATHE


TAPER No.	MODEL No.	EDP No.	PRICE
25	NC25-ER16	P2772311	
	NC25-ER20	P2772301	
	NC25-ER25	P2772302	
32	NC32-ER20	P2772303	
	NC32-ER25	P2772304	
	NC32-ER32	P2772305	
40	NC40-ER32	P2772306	

CBT (BT DUAL CONTACT)


TAPER No.	MODEL No.	EDP No.	PRICE
40	CBT40-ER25-75 G2.5	P2772011	
	CBT40-ER25-100 G2.5	P2772002	
	CBT40-ER32-60 G2.5	P2772014	
	CBT40-ER32-100 G2.5	P2772003	

K - STRAIGHT (SLIM TYPE)


TAPER No.	MODEL No.	EDP No.	PRICE
K12	K12-ER8M-150	P2780002	
	K12-ER8M-70	P2772205	
K16	K16-ER11M-100	P2780006	
	K16-ER11M-140	P2772206	
K20	K20-ER20M-140	P2772208	
K25	K25-ER16M-140	P2772209	
	K25-ER20M-140	P2772210	
	K25-ER25M-140	P2772211	

ER COLLET - UF
UF
ER COLLET - UF
UF


MODEL No.	EDP No.	PRICE
ER8-1.0	P2506292	
ER8-1.5	P2506293	
ER8-2.0	P2506294	
ER8-2.5	P2506295	
ER8-3.0	P2506296	
ER8-3.5	P2506297	
ER8-4.0	P2506298	
ER8-4.5	P2506299	
ER8-5.0	P2506300	
ER11-1.0	P2506311	
ER11-1.5	P2506312	
ER11-2.0	P2506313	
ER11-2.5	P2506314	
ER11-3.0	P2506315	
ER11-3.5	P2506316	
ER11-4.0	P2506317	
ER11-4.5	P2506318	
ER11-5.0	P2506319	
ER11-5.5	P2506320	
ER11-6.0	P2506321	
ER11-6.5	P2506322	
ER11-7.0	P2506323	
ER16-1.0	P2506201	
ER16-1.5	P2778506	
ER16-2.0	P2506202	
ER16-3.0	P2506203	
ER16-4.0	P2506204	
ER16-5.0	P2506205	
ER16-6.0	P2506206	
ER16-7.0	P2506207	
ER16-8.0	P2506208	
ER16-9.0	P2506209	
ER16-10.0	P2506210	
ER20-1.0	P2506344	
ER20-1.5	P2506345	
ER20-2.0	P2506332	
ER20-2.5	P2506346	
ER20-3.0	P2506333	
ER20-4.0	P2506334	
ER20-5.0	P2506335	
ER20-6.0	P2506336	
ER20-7.0	P2506337	
ER20-8.0	P2506338	
ER20-9.0	P2506339	

MODEL No.	EDP No.	PRICE
ER20-10.0	P2506340	
ER20-11.0	P2506341	
ER20-12.0	P2506342	
ER20-13.0	P2506343	
ER25-1.0	P2506227	
ER25-1.5	P2506228	
ER25-2.0	P2506212	
ER25-2.5	P2506229	
ER25-3.0	P2506213	
ER25-4.0	P2506214	
ER25-5.0	P2506215	
ER25-6.0	P2506216	
ER25-7.0	P2506217	
ER25-8.0	P2506218	
ER25-9.0	P2506219	
ER25-10.0	P2506220	
ER25-11.0	P2506221	
ER25-12.0	P2506222	
ER25-13.0	P2506223	
ER25-14.0	P2506224	
ER25-15.0	P2506225	
ER25-16.0	P2506226	
ER32-2.0	P2506251	
ER32-2.5	P2506252	
ER32-3.0	P2506233	
ER32-4.0	P2506234	
ER32-5.0	P2506235	
ER32-6.0	P2506236	
ER32-7.0	P2506237	
ER32-8.0	P2506238	
ER32-9.0	P2506239	
ER32-10.0	P2506240	
ER32-11.0	P2506241	
ER32-12.0	P2506242	
ER32-13.0	P2506243	
ER32-14.0	P2506244	
ER32-15.0	P2506245	
ER32-16.0	P2506246	
ER32-17.0	P2506247	
ER32-18.0	P2506248	
ER32-19.0	P2506249	
ER32-20.0	P2506250	
ER40-3.0	P2506287	
ER40-4.0	P2506264	

ER COLLET - UF
UF

ER COLLET HIGH PRECISION
ERHP

* T.I.R : ≤0.010mm at 3D (I.D. 1.0 ~ 10.0mm)
 * T.I.R : ≤0.015mm at 3D (I.D. >10.0mm)


ER COLLET HIGH PRECISION
ERHP

* T.I.R : ≤0.010mm at 3D (I.D. 1.0 ~ 10.0mm)
 * T.I.R : ≤0.015mm at 3D (I.D. >10.0mm)


ER COLLET GER HIGH PRECISION
GER

* T.I.R : ≤0.005mm at 3D



MODEL No.	EDP No.	PRICE
ER40-5.0	P2506265	
ER40-6.0	P2506266	
ER40-7.0	P2506267	
ER40-8.0	P2506268	
ER40-9.0	P2506269	
ER40-10.0	P2506270	
ER40-11.0	P2506271	
ER40-12.0	P2506272	
ER40-13.0	P2506273	
ER40-14.0	P2506274	
ER40-15.0	P2506275	
ER40-16.0	P2506276	
ER40-17.0	P2506277	
ER40-18.0	P2506278	
ER40-19.0	P2506279	
ER40-20.0	P2506280	
ER40-21.0	P2506281	
ER40-22.0	P2506282	
ER40-23.0	P2506283	
ER40-24.0	P2506284	
ER40-25.0	P2506285	
ER40-26.0	P2506286	
ER40-27.0	P2506288	
ER40-28.0	P2506289	
ER40-29.0	P2506290	
ER40-30.0	P2506291	
ER8SET Φ1.0 ~ 5.0mm (9pcs)	P2506301	
ER11SET Φ1.0 ~ 7.0mm (13pcs)	P2506302	
ER16SET Φ1.0 ~ 10.0mm (10pcs)	P2506303	
ER20SET Φ2.0 ~ 13.0mm (12pcs)	P2506304	
ER25SET Φ2.0 ~ 16.0mm (15pcs)	P2506305	
ER32SET Φ3.0 ~ 20.0mm (18pcs)	P2506306	
ER40SET Φ4.0 ~ 26.0mm (23pcs)	P2506307	

MODEL No.	EDP No.	PRICE
ER8-1.0MM HP	P2506292H	
ER8-1.5MM HP	P2506293H	
ER8-2.0MM HP	P2506294H	
ER8-2.5MM HP	P2506295H	
ER8-3.0MM HP	P2506296H	
ER8-3.5MM HP	P2506297H	
ER8-4.0MM HP	P2506298H	
ER8-4.5MM HP	P2506299H	
ER8-5.0MM HP	P2506300H	
ER16-1.0MM HP	P2506201H	
ER16-2.0MM HP	P2506202H	
ER16-3.0MM HP	P2506203H	
ER16-4.0MM HP	P2506204H	
ER16-5.0MM HP	P2506205H	
ER16-6.0MM HP	P2506206H	
ER16-7.0MM HP	P2506207H	
ER16-8.0MM HP	P2506208H	
ER16-9.0MM HP	P2506209H	
ER16-10.0MM HP	P2506210H	
ER25-2.0MM HP	P2506212H	
ER25-3.0MM HP	P2506213H	
ER25-4.0MM HP	P2506214H	
ER25-5.0MM HP	P2506215H	
ER25-6.0MM HP	P2506216H	
ER25-7.0MM HP	P2506217H	
ER25-8.0MM HP	P2506218H	
ER25-9.0MM HP	P2506219H	
ER25-10.0MM HP	P2506220H	
ER25-11.0MM HP	P2506221H	
ER25-12.0MM HP	P2506222H	
ER25-13.0MM HP	P2506223H	
ER25-14.0MM HP	P2506224H	
ER25-15.0MM HP	P2506225H	
ER25-16.0MM HP	P2506226H	
ER32-3.0MM HP	P2506233H	
ER32-4.0MM HP	P2506234H	
ER32-5.0MM HP	P2506235H	
ER32-6.0MM HP	P2506236H	

MODEL No.	EDP No.	PRICE
ER32-7.0MM HP	P2506237H	
ER32-8.0MM HP	P2506238H	
ER32-9.0MM HP	P2506239H	
ER32-10.0MM HP	P2506240H	
ER32-11.0MM HP	P2506241H	
ER32-12.0MM HP	P2506242H	
ER32-13.0MM HP	P2506243H	
ER32-14.0MM HP	P2506244H	
ER32-15.0MM HP	P2506245H	
ER32-16.0MM HP	P2506246H	
ER32-17.0MM HP	P2506247H	
ER32-18.0MM HP	P2506248H	
ER32-19.0MM HP	P2506249H	
ER32-20.0MM HP	P2506250H	
ER8HP SET Φ1.0 ~ 5.0mm (9pcs)	P2506301H	
ER16HP SET Φ1.0 ~ 10.0mm (10pcs)	P2506303H	
ER25HP SET Φ2.0 ~ 16.0mm (15pcs)	P2506305H	
ER32HP SET Φ3.0 ~ 20.0mm (18pcs)	P2506306H	

MODEL No.	EDP No.	PRICE
GER11-3.0 *	P2772405	
GER16-3.0 *	P2772416	
GER16-4.0 *	P2772417	
GER16-5.0 *	P2772418	
GER16-6.0 *	P2772419	
GER16-7.0 *	P2772420	
GER16-8.0 *	P2772421	
GER16-9.0 *	P2772422	
GER16-10.0 *	P2772423	
GER20-3.0 *	P2772427	
GER20-4.0 *	P2772428	
GER20-5.0 *	P2772429	
GER20-6.0 *	P2772430	
GER20-7.0 *	P2772431	
GER20-8.0 *	P2772432	
GER20-10.0 *	P2772434	
GER20-12.0 *	P2772436	
GER25-1.0 *	P2772456	
GER25-2.0 *	P2772441	
GER25-2.5	P2772458	
GER25-3.0 *	P2772442	
GER25-4.0 *	P2772443	
GER25-5.0 *	P2772444	
GER25-6.0 *	P2772445	
GER25-7.0 *	P2772446	
GER25-8.0 *	P2772447	
GER25-9.0 *	P2772448	
GER25-10.0 *	P2772449	
GER25-11.0 *	P2772450	
GER25-12.0 *	P2772451	
GER25-13.0 *	P2772452	
GER25-14.0 *	P2772453	
GER25-16.0 *	P2772455	
GER32-3.0 *	P2772459	
GER32-6.0 *	P2772462	
GER32-9.0 *	P2772465	

* These items will be supplied with special price until stock available

ER COLLET GER HIGH PRECISION
GER

* T.I.R : ≤0.005mm at 3D



MODEL No.	EDP No.	PRICE
GER32-10.0 *	P2772466	
GER32-11.0 *	P2772467	
GER32-12.0 *	P2772468	
GER32-13.0 *	P2772469	
GER32-14.0 *	P2772470	
GER32-15.0 *	P2772471	
GER32-16.0 *	P2772472	
GER32-18.0 *	P2772474	

* These items will be supplied with special price until stock available

TAP ER COLLET DIN
RDTC

Tap ER Collet conforms to DIN Standard



MODEL No.	EDP No.	PRICE
RD16TC-6.0X4.9	P2772512D	
RD16TC-7.0X5.5	P2772513D	
RD20TC-3.5X2.7	P2772514D	
RD20TC-4.0X3.0	P2772515D	
RD20TC-4.5X3.4	P2772516D	
RD20TC-6.0X4.9	P2772519D	
RD20TC-7.0X5.5	P2772520D	
RD20TC-8.0X6.2	P2772521D	
RD20TC-9.0X7.0	P2772522D	
RD20TC-10.0X8.0	P2772523D	
RD25TC-3.5X2.7	P2772524D	
RD25TC-4.0X3.0	P2772525D	
RD25TC-4.5X3.4	P2772526D	
RD25TC-5.0X4.0	P2772527D	
RD25TC-5.5X4.3	P2772528D	
RD25TC-6.0X4.9	P2772529D	
RD25TC-7.0X5.5	P2772530D	
RD25TC-8.0X6.2	P2772531D	
RD25TC-9.0X7.0	P2772532D	
RD25TC-10.0X8.0	P2772533D	
RD25TC-11.0X9.0	P2772534D	
RD25TC-12.0X9.0	P2772535D	
RD25TC-14.0X11.0	P2772536D	
RD25TC-16.0X12.0	P2772537D	
RD32TC-3.5X2.7	P2772538D	
RD32TC-4.0X3.0	P2772539D	
RD32TC-4.5X3.4	P2772540D	
RD32TC-5.0X4.0	P2772541D	
RD32TC-5.5X4.3	P2772542D	
RD32TC-6.0X4.9	P2772543D	
RD32TC-7.0X5.5	P2772544D	
RD32TC-8.0X6.2	P2772545D	
RD32TC-9.0X7.0	P2772546D	
RD32TC-10.0X8.0	P2772547D	
RD32TC-11.0X9.0	P2772548D	
RD32TC-12.0X9.0	P2772549D	
RD32TC-14.0X11.0	P2772550D	
RD32TC-16.0X12.0	P2772551D	
RD40TC-11.0X9.0	P2772562D	
RD40TC-12.0X9.0	P2772563D	
RD40TC-16.0X12.0	P2772565D	
RD40TC-18.0X14.5	P2772566D	
RD40TC-20.0X16.0	P2772567D	

ER NUT
PART

DIN 6499/ISO 15488


■ SQ-ER (Standard)

MODEL No.	EDP No.	PRICE
SQ-ER16	P2700001	
SQ-ER20	P2700002	


■ SQ-ER (Standard : Round)

MODEL No.	EDP No.	PRICE
SQ-ER25	P2700003	
SQ-ER32	P2700004	
SQ-ER40	P2700005	

ER SPANNER / WRENCH
SP

FOR ER NUT



FIG. 1



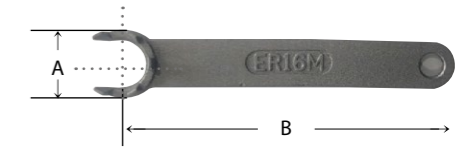
FIG. 2

MODEL No.	EDP No.	PRICE
ER16SP	P2772602	
ER20SP	P2772603	
ER25SP	P2772604	
ER32SP	P2772605	
ER40SP	P2772606	

▶ Design and shape could be changed without prior notice.

ER SPANNER / WRENCH
SP

FOR ER Mini NUT



MODEL No.	EDP No.	PRICE
GE16M	P2772610	

END MILL HOLDER
EMH

SK - DIN 69871



TAPER No.	MODEL No.	EDP No.	PRICE
40	SK40AD/B-EMH6-50 G2.5	P2779030	
	SK40AD/B-EMH8-50 G2.5	P2779031	
	SK40AD/B-EMH10-50 G2.5	P2779032	
	SK40AD/B-EMH12-50 G2.5	P2779033	
	SK40AD/B-EMH16-63 G2.5	P2779034	
	SK40AD/B-EMH20-63 G2.5	P2779035	
	SK40AD/B-EMH25-100 G2.5	P2779036	
	SK40AD/B-EMH32-100 G2.5	P2779037	
50	SK50AD/B-EMH6-63 G2.5	P2779038	
	SK50AD/B-EMH8-63 G2.5	P2779039	
	SK50AD/B-EMH10-63 G2.5	P2779040	
	SK50AD/B-EMH12-63 G2.5	P2779041	
	SK50AD/B-EMH16-63 G2.5	P2779042	
	SK50AD/B-EMH20-63 G2.5	P2779043	
	SK50AD/B-EMH25-80 G2.5	P2779044	
	SK50AD/B-EMH32-100 G2.5	P2779045	

 ▶ Holder for cutting tools with Whistle notch shank is available.
 ▶ Combi-style holder with ball jointed clamping screw which can be used with cutting tools with Weldon and Whistle notch shank is available.

END MILL HOLDER
EMH
SK - DIN 69871


TAPER No.	MODEL No.	EDP No.	PRICE
40	SK40-EMH10-50 G6.3	P2521011	
	SK40-EMH12-50 G6.3	P2521012	
	SK40-EMH16-63 G6.3	P2521013	
	SK40-EMH20-63 G6.3	P2521014	
	SK40-EMH25-100 G6.3	P2521015	
	SK40-EMH32-100 G6.3	P2521016	
	SK40-EMH6-50 G6.3	P2521009	
	SK40-EMH8-50 G6.3	P2521010	

- ▶ Holder for cutting tools with Whistle notch shank is available.
- ▶ Combi-style holder with ball jointed clamping screw which can be used with cutting tools with Weldon and Whistle notch shank is available.

SK - DIN 69871


TAPER No.	MODEL No.	EDP No.	PRICE
50	SK50-EMH10-63 G6.3	P2521019	
	SK50-EMH20-63 G6.3	P2521022	
	SK50-EMH25-80 G6.3	P2521023	
	SK50-EMH32-100 G6.3	P2521024	

- ▶ Holder for cutting tools with Whistle notch shank is available.
- ▶ Combi-style holder with ball jointed clamping screw which can be used with cutting tools with Weldon and Whistle notch shank is available.

END MILL HOLDER
EMH
SK - DIN 69871


TAPER No.	MODEL No.	EDP No.	PRICE
40	SK40AD/B-EMH6-50 G6.3	P2531009	
	SK40AD/B-EMH8-50 G6.3	P2531010	
	SK40AD/B-EMH10-50 G6.3	P2531011	
	SK40AD/B-EMH12-50 G6.3	P2531012	
	SK40AD/B-EMH16-63 G6.3	P2531013	
	SK40AD/B-EMH20-63 G6.3	P2531014	
	SK40AD/B-EMH25-100 G6.3	P2531015	
	SK40AD/B-EMH32-100 G6.3	P2531016	
	SK50AD/B-EMH10-63 G6.3	P2531019	
	SK50AD/B-EMH12-63 G6.3	P2531020	
	SK50AD/B-EMH16-63 G6.3	P2531021	
	50	SK50AD/B-EMH20-63 G6.3	P2531022
SK50AD/B-EMH25-80 G6.3		P2531023	
SK50AD/B-EMH32-100 G6.3		P2531024	
SK50AD/B-EMH40-100 G6.3		P2531025	

- ▶ Holder for cutting tools with Whistle notch shank is available.
- ▶ Combi-style holder with ball jointed clamping screw which can be used with cutting tools with Weldon and Whistle notch shank is available.

HSK FORM A - ISO 12164-1/DIN 69893


TAPER No.	MODEL No.	EDP No.	PRICE
63A	HSK63A-EMH6-65 G2.5	P2775501	
	HSK63A-EMH8-65 G2.5	P2775502	
	HSK63A-EMH10-65 G2.5	P2775503	
	HSK63A-EMH12-80 G2.5	P2775504	
	HSK63A-EMH16-80 G2.5	P2775506	
	HSK63A-EMH20-80 G2.5	P2775508	
	HSK63A-EMH25-110 G2.5	P2775509	
	HSK63A-EMH32-110 G2.5	P2775510	

- ▶ Holder for cutting tools with Whistle notch shank is available.
- ▶ Combi-style holder with ball jointed clamping screw which can be used with cutting tools with Weldon and Whistle notch shank is available.

END MILL HOLDER
EMH
HSK FORM A - ISO 12164-1/DIN 69893


TAPER No.	MODEL No.	EDP No.	PRICE
63A	HSK63A-EMH6-65 G6.3	P2563001	
	HSK63A-EMH8-65 G6.3	P2563002	
	HSK63A-EMH10-65 G6.3	P2563003	
	HSK63A-EMH12-80 G6.3	P2563004	
	HSK63A-EMH20-80 G6.3	P2563008	
	HSK63A-EMH25-110 G6.3	P2563009	
	HSK63A-EMH32-110 G6.3	P2563010	
	100A	HSK100A-EMH32-100 G6.3	P2563050
HSK100A-EMH40-120 G6.3		P2563051	

- ▶ Holder for cutting tools with Whistle notch shank is available.
- ▶ Combi-style holder with ball jointed clamping screw which can be used with cutting tools with Weldon and Whistle notch shank is available.

BT - JIS B6339/MAS 403


TAPER No.	MODEL No.	EDP No.	PRICE
40	BT40AD/B-EMH10-63 G2.5	P2773033	
	BT40AD/B-EMH12-63 G2.5	P2773034	
	BT40AD/B-EMH16-63 G2.5	P2773036	
	BT40AD/B-EMH20-63 G2.5	P2773038	
	BT40AD/B-EMH25-90 G2.5	P2773039	
	BT40AD/B-EMH32-100 G2.5	P2773040	
	BT40AD/B-EMH6-50 G2.5	P2773031	
	BT40AD/B-EMH8-50 G2.5	P2773032	
50	BT50AD/B-EMH16-80 G2.5	P2773046	
	BT50AD/B-EMH20-80 G2.5	P2773048	
	BT50AD/B-EMH25-100 G2.5	P2773049	
	BT50AD/B-EMH32-105 G2.5	P2773050	

END MILL HOLDER
EMH
BT - JIS B6339/MAS 403


TAPER No.	MODEL No.	EDP No.	PRICE	
40	BT40-EMH6-50 G6.3	P2773061		
	BT40-EMH8-50 G6.3	P2773062		
	BT40-EMH10-63 G6.3	P2773063		
	BT40-EMH12-63 G6.3	P2773064		
	BT40-EMH16-63 G6.3	P2773066		
	BT40-EMH20-63 G6.3	P2773068		
	BT40-EMH25-90 G6.3	P2773069		
	BT40-EMH32-100 G6.3	P2773070		
	50	BT50-EMH20-80 G6.3	P2773078	
		BT50-EMH25-100 G6.3	P2773079	
	BT50-EMH32-105 G6.3	P2773080		

- ▶ Holder for cutting tools with Whistle notch shank is available.
- ▶ Combi-style holder with ball jointed clamping screw which can be used with cutting tools with Weldon and Whistle notch shank is available.

**END MILL HOLDER
SPRAY NOZZLE TYPE** **EMH**
SK - DIN 69871


TAPER No.	MODEL No.	EDP No.	PRICE
40	SK40AD/B-EMH10C-50 G2.5	P2779050	
	SK40AD/B-EMH12C-50 G2.5	P2779051	
	SK40AD/B-EMH16C-63 G2.5	P2779053	
	SK40AD/B-EMH20C-63 G2.5	P2779055	
	SK40AD/B-EMH25C-100 G2.5	P2779056	
	SK40AD/B-EMH32C-100 G2.5	P2779057	
	SK40AD/B-EMH6C-50 G2.5	P2779048	
	SK40AD/B-EMH8C-50 G2.5	P2779049	
50	SK50AD/B-EMH10C-63 G2.5	P2779060	
	SK50AD/B-EMH12C-63 G2.5	P2779061	
	SK50AD/B-EMH16C-63 G2.5	P2779063	
	SK50AD/B-EMH25C-80 G2.5	P2779066	
	SK50AD/B-EMH6C-63 G2.5	P2779058	
SK50AD/B-EMH8C-63 G2.5	P2779059		

- ▶ Holder for cutting tools with Whistle notch shank is available.
- ▶ Combi-style holder with ball jointed clamping screw which can be used with cutting tools with Weldon and Whistle notch shank is available.

SK - DIN 69871


TAPER No.	MODEL No.	EDP No.	PRICE
40	SK40AD/B-EMH6C-50 G6.3	P2779001	
	SK40AD/B-EMH10C-50 G6.3	P2779003	
	SK40AD/B-EMH16C-63 G6.3	P2779006	
	SK40AD/B-EMH32C-100 G6.3	P2779010	

- ▶ Holder for cutting tools with Whistle notch shank is available.
- ▶ Combi-style holder with ball jointed clamping screw which can be used with cutting tools with Weldon and Whistle notch shank is available.

**END MILL HOLDER
SPRAY NOZZLE TYPE** **EMH**
HSK FORM A - ISO 12164-1/DIN 69893


TAPER No.	MODEL No.	EDP No.	PRICE
63A	HSK63A-EMH10C-65 G2.5	P2777203	
	HSK63A-EMH12C-80 G2.5	P2777204	
	HSK63A-EMH16C-80 G2.5	P2777205	
	HSK63A-EMH20C-80 G2.5	P2777208	
	HSK63A-EMH25C-110 G2.5	P2777209	
	HSK63A-EMH32C-110 G2.5	P2777210	
	HSK63A-EMH6C-65 G2.5	P2777201	
	HSK63A-EMH8C-65 G2.5	P2777202	

- ▶ Holder for cutting tools with Whistle notch shank is available.
- ▶ Combi-style holder with ball jointed clamping screw which can be used with cutting tools with Weldon and Whistle notch shank is available.

BT - JIS B6339/MAS 403


TAPER No.	MODEL No.	EDP No.	PRICE
40	BT40AD/B-EMH12C-63 G2.5	P2772994	

SIDE LOCK ARBOR **SLA**
BT - JIS B6339/MAS 403


TAPER No.	MODEL No.	EDP No.	PRICE
40	BT40-SLA16-90	P2780214	

- ▶ Regarding Balancing Grade, please discuss separately.

SIDE LOCK ARBOR **SLA**
CBT (BT DUAL CONTACT)


TAPER No.	MODEL No.	EDP No.	PRICE
40	CBT40-SLA16-90	P2772931	
	CBT40-SLA20-90	P2772901	
	CBT40-SLA25-90	P2772902	
	CBT40-SLA32-90	P2772903	

- ▶ Standard design of side lock arbor is for cutting tools with straight shank having flat face.
- ▶ Regarding Balancing Grade, please discuss separately.

POWER MILLING CHUCK **C**
SK - DIN 69871


TAPER No.	MODEL No.	EDP No.	PRICE
40	SK40-C20-90	P2526003	
50	SK50-C32-90	P2526007	

SK - DIN 69871


TAPER No.	MODEL No.	EDP No.	PRICE
40	SK40-C32-105	P2526010	
	SK40-C32-135	P2526015	
	SK40-C32-90	P2526004	
50	SK50-C20-80	P2526005	
	SK50-C25-105	P2526012	
	SK50-C32-105	P2526013	
	SK50-C32-165	P2526020	

POWER MILLING CHUCK **C**
HSK FORM A - ISO 12164-1/DIN 69893


TAPER No.	MODEL No.	EDP No.	PRICE
63A	HSK63A-C20-105	P2773152	
	HSK63A-C32-130	P2600032	

BT - JIS B6339/MAS 403


TAPER No.	MODEL No.	EDP No.	PRICE
40	BT40-C20-105	P2546004	
	BT40-C20-80	P2546003	
	BT40-C32-90	P2546006	

HIGH SPEED POWER MILLING CHUCK **C**
SK - DIN 69871

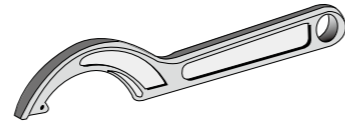

TAPER No.	MODEL No.	EDP No.	PRICE
40	SK40-C20-105HS	P2526022	
	SK40-C25-105HS	P2773001	
	SK40-C32-105HS	P2526023	
50	SK50-C32-105HS	P2773004	

MILLING CHUCK SET
C


TAPER No.	MODEL No.	COMPONENTS	EDP No.	PRICE
SK	SSK40-C32	SK40-C32-105	P2773301	
		K32-6, 8, 10, 12, 16, 20, 25 (7pcs)		
SK	SSK50-C32	SK50-C32-105	P2773302	
		K32-6, 8, 10, 12, 16, 20, 25 (7pcs)		
BT	SBT40-C32	BT40-C32-105	P2546022	
		K32-6, 8, 10, 12, 16, 20, 25 (7pcs)		

POWER MILLING CHUCK COLLET
K


MODEL No.	EDP No.	PRICE
K20-D06	P2506401	
K20-D08	P2506402	
K20-D10	P2506403	
K20-D12	P2506404	
K20-D16	P2506405	
K25-D06	P2506601	
K25-D08	P2506602	
K25-D10	P2506603	
K25-D12	P2506604	
K25-D16	P2506605	
K25-D20	P2506606	
K32-D08	P2506412	
K32-D10	P2506413	
K32-D12	P2506414	
K32-D16	P2506415	
K32-D20	P2506416	
K32-D25	P2506417	

SPANNER FOR MILLING CHUCK
SP


MODEL No.	EDP No.	PRICE
C20SP	P2773401	
C25SP	P2773402	
C32SP	P2600033	

SHELL MILL ARBOR (COOLANT CHANNEL)
SMA
SK - DIN 69871


TAPER No.	MODEL No.	EDP No.	PRICE
40	SK40AD/B-SMA16C-120 G6.3	P2801015C	
	SK40AD/B-SMA16C-60 G6.3	P2801004C	
	SK40AD/B-SMA22C-120 G6.3	P2801016C	
	SK40AD/B-SMA22C-60 G6.3	P2801005C	
	SK40AD/B-SMA27C-120 G6.3	P2801017C	
	SK40AD/B-SMA27C-60 G6.3	P2801006C	
	SK40AD/B-SMA32C-120 G6.3	P2801018C	
	SK40AD/B-SMA32C-60 G6.3	P2801007C	
	SK40AD/B-SMA40C-60 G6.3	P2801008C	
	SK50AD/B-SMA16C-120 G6.3	P2801019C	
	SK50AD/B-SMA16C-75 G6.3	P2801009C	
	SK50AD/B-SMA22C-120 G6.3	P2801020C	
50	SK50AD/B-SMA22C-75 G6.3	P2801010C	
	SK50AD/B-SMA27C-120 G6.3	P2801021C	
	SK50AD/B-SMA27C-75 G6.3	P2801011C	
	SK50AD/B-SMA32C-120 G6.3	P2801022C	
	SK50AD/B-SMA32C-75 G6.3	P2801012C	
	SK50AD/B-SMA40C-75 G6.3	P2801013C	
	SK50AD/B-SMA50C-75 G6.3	P2801014C	

SHELL MILL ARBOR (COOLANT CHANNEL)
SMA
HSK FORM A - ISO 12164-1/DIN 69893


TAPER No.	MODEL No.	EDP No.	PRICE
63A	HSK63A-SMA16C-50 G6.3	P2566001C	
	HSK63A-SMA22C-50 G6.3	P2566002C	
	HSK63A-SMA27C-60 G6.3	P2566003C	
	HSK63A-SMA32C-60 G6.3	P2566004C	
	HSK63A-SMA40C-60 G6.3	P2566005C	

BT - JIS B6339/MAS 403


TAPER No.	MODEL No.	EDP No.	PRICE	
40	BT40AD/B-SMA16C-120 G6.3	P2801035C		
	BT40AD/B-SMA16C-60 G6.3	P2801024C		
	BT40AD/B-SMA22C-120 G6.3	P2801036C		
	BT40AD/B-SMA22C-60 G6.3	P2801025C		
	BT40AD/B-SMA27C-120 G6.3	P2801037C		
	BT40AD/B-SMA27C-60 G6.3	P2801026C		
	BT40AD/B-SMA32C-120 G6.3	P2801038C		
	BT40AD/B-SMA32C-60 G6.3	P2801027C		
	BT40AD/B-SMA40C-60 G6.3	P2801028C		
	50	BT50AD/B-SMA16C-75 G6.3	P2801029C	
		BT50AD/B-SMA22C-75 G6.3	P2801030C	
		BT50AD/B-SMA27C-120 G6.3	P2801041C	
BT50AD/B-SMA27C-75 G6.3		P2801031C		
	BT50AD/B-SMA32C-75 G6.3	P2801032C		

SHELL MILL ARBOR (COOLANT CHANNEL)
SMA
CBT (BT DUAL CONTACT)


TAPER No.	MODEL No.	EDP No.	PRICE
40	CBT40AD/B-SMA22C-60	P2801048C	
	CBT40AD/B-SMA27C-60	P2801049C	
	CBT40AD/B-SMA32C-60	P2801050C	

SHELL MILL ARBOR
SMA
SK - DIN 69871


TAPER No.	MODEL No.	EDP No.	PRICE	
40	SK40-SMA16-120 G6.3 *	P2778915		
	SK40-SMA16-60 G6.3 *	P2778904		
	SK40-SMA22-120 G6.3 *	P2778916		
	SK40-SMA22-60 G6.3 *	P2778905		
	SK40-SMA27-120 G6.3 *	P2778917		
	SK40-SMA27-60 G6.3 *	P2778906		
	SK40-SMA32-120 G6.3 *	P2778918		
	SK40-SMA32-60 G6.3 *	P2778907		
	50	SK50-SMA16-120 G6.3 *	P2778919	
		SK50-SMA16-75 G6.3 *	P2778909	
		SK50-SMA22-120 G6.3 *	P2778920	
		SK50-SMA22-75 G6.3 *	P2778910	
SK50-SMA27-120 G6.3 *		P2778921		
	SK50-SMA27-75 G6.3 *	P2778911		
	SK50-SMA32-120 G6.3 *	P2778922		
	SK50-SMA32-75 G6.3 *	P2778912		
	SK50-SMA40-75 G6.3 *	P2778913		

* These items will be supplied with special price until stock available

SHELL MILL ARBOR
SMA
HSK FORM A - ISO 12164-1/DIN 69893


TAPER No.	MODEL No.	EDP No.	PRICE
63A	HSK63A-SMA27-60 G6.3 *	P2566003	
100A	HSK100A-SMA22-50 G6.3 *	P2566012	

* These items will be supplied with special price until stock available

SHELL MILL ARBOR
SMA
CBT (BT DUAL CONTACT)


TAPER No.	MODEL No.	EDP No.	PRICE
40	CBT40-SMA22-60 G2.5 *	P2778705	
	CBT40-SMA27-60 G2.5 *	P2778706	
	CBT40-SMA32-60 G2.5 *	P2778707	

* These items will be supplied with special price until stock available

COMBI-SHELL MILL ARBOR
CMA
BT - JIS B6339/MAS 403


TAPER No.	MODEL No.	EDP No.	PRICE
40	BT40-CMA16-55 G6.3	P2544004	
	BT40-CMA22-55 G6.3	P2544005	
	BT40-CMA27-55 G6.3	P2544006	
	BT40-CMA32-60 G6.3	P2544007	

SYNCHRO TAPPING CHUCKER TYPE
SYTER
HSK FORM A - ISO 12164-1/DIN 69893


TAPER No.	MODEL No.	EDP No.	PRICE
63A	HSK63A-SYTER16-90 *	P2773801	
	HSK63A-SYTER20-94 *	P2773802	
	HSK63A-SYTER27-105 *	P2773803	

* These items will be supplied until stock available

- Feature :
- To compensate for synchronization errors to extend tap life and to improve thread quality
 - To compensate for pitch tolerances of taps
 - For machine with synchronized spindle

BT - JIS B6339/MAS 403


TAPER No.	MODEL No.	EDP No.	PRICE
40	BT40-SMA27-120 G6.3 *	P2778817	
	BT40-SMA27-60 G6.3 *	P2778806	
	BT40-SMA32-60 G6.3 *	P2778807	
	BT40-SMA40-60 G6.3 *	P2778808	
50	BT50-SMA16-75 G6.3 *	P2778809	
	BT50-SMA22-75 G6.3 *	P2778810	
	BT50-SMA27-120 G6.3 *	P2778821	
	BT50-SMA27-75 G6.3 *	P2778811	
	BT50-SMA32-75 G6.3 *	P2778812	

* These items will be supplied with special price until stock available

COMBI-SHELL MILL ARBOR
CMA
SK - DIN 69871


TAPER No.	MODEL No.	EDP No.	PRICE
40	SK40-CMA16-55 G6.3	P2524004	
	SK40-CMA16-100 G6.3	P2524015	
	SK40-CMA22-100 G6.3	P2524016	
	SK40-CMA22-55 G6.3	P2524005	
	SK40-CMA27-55 G6.3	P2524006	
	SK40-CMA32-60 G6.3	P2524007	
50	SK50-CMA16-55 G6.3	P2524009	
	SK50-CMA22-55 G6.3	P2524010	
	SK50-CMA27-55 G6.3	P2524011	
	SK50-CMA32-55 G6.3	P2524012	

SYNCHRO TAPPING CHUCKER TYPE
SYTER
SK - DIN 69871


TAPER No.	MODEL No.	EDP No.	PRICE
40	SK40AD/B-SYTER12-79	P2773701	
	SK40AD/B-SYTER16-85	P2773702	
	SK40AD/B-SYTER20-90	P2773703	
	SK40AD/B-SYTER27-100	P2773704	
	SK40AD/B-SYTER33-120	P2773705	

- Feature :
- To compensate for synchronization errors to extend tap life and to improve thread quality
 - To compensate for pitch tolerances of taps
 - For machine with synchronized spindle

BT - JIS B6339/MAS 403


TAPER No.	MODEL No.	EDP No.	PRICE
40	BT40AD/B-SYTER12-79	P2776301	
	BT40AD/B-SYTER16-85	P2776302	
	BT40AD/B-SYTER20-90	P2776303	
	BT40AD/B-SYTER27-100	P2776304	
50	BT50AD/B-SYTER27-110	P2776309	

- Feature :
- To compensate for synchronization errors to extend tap life and to improve thread quality
 - To compensate for pitch tolerances of taps
 - For machine with synchronized spindle

SYNCHRO TAPPING CHUCK ER TYPE SYTER
TAPPING ER CHUCK TER
KW - STRAIGHT


MODEL No.	EDP No.	PRICE
KW20-SYTER16	P2773901	
KW25-SYTER16	P2773902	
KW25-SYTER27	P2773903	

- Feature :
- To compensate for synchronization errors to extend tap life and to improve thread quality
 - To compensate for pitch tolerances of taps
 - For machine with synchronized spindle

SK - DIN 69871


TAPER No.	MODEL No.	EDP No.	PRICE
40	SK40-TER16-100	P2774001	
	SK40-TER32-130	P2774003	

- Various size of ER Collet is adapted and minimize interference with workpiece

SYNCHRO TAPPING CHUCK QUICK CHANGE TYPE SYTC
SK - DIN 69871


TAPER No.	MODEL No.	EDP No.	PRICE
40	SK40-SYTC12-65	P2774201	
50	SK50-SYTC12-65	P2774204	

- Feature :
- To compensate for synchronization errors to extend tap life and to improve thread quality
 - To compensate for pitch tolerances of taps
 - For machine with synchronized spindle

BT - JIS B6339/MAS 403


TAPER No.	MODEL No.	EDP No.	PRICE
40	BT40-TER16-100	P2774159	
	BT40-TER32-110	P2774161	

- Refer to Tapping Adapter conforming to DIN Standard

TAPPING CHUCK TC
SK - DIN 69871


TAPER No.	MODEL No.	EDP No.	PRICE
40	SK40-TC12-90	P2520001	
	SK40-TC24-120	P2520002	
	SK40-TC12-130	P2520006	
50	SK50-TC12-130	P2520003	
	SK50-TC24-142	P2520004	
	SK50-TC38-175	P2520005	

- Refer to Tapping Adapter conforming to DIN Standard

HSK FORM A - ISO 12164-1/DIN 69893


TAPER No.	MODEL No.	EDP No.	PRICE
63A	HSK63A-TC12-120	P2774501	
	HSK63A-TC24-142	P2774502	
100A	HSK100A-TC24-142	P2774504	

- Refer to Tapping Adapter conforming to DIN Standard

BT - JIS B6339/MAS 403


TAPER No.	MODEL No.	EDP No.	PRICE
40	BT40-TC12-90	P2540011	
	BT40-TC24-100	P2540002	
50	BT50-TC24-142	P2540004	
	BT50-TC38-175	P2540005	

- Refer to Tapping Adapter conforming to DIN Standard

TAP ADAPTER DIN TC
Tap ER Collet conforms to DIN Standard


TAPER No.	MODEL No.	EDP No.	PRICE
TCS12D	TCS12 D-108	P2774610	
	TCS12 D-2821	P2774601	
	TCS12 D-3527	P2774602	
	TCS12 D-4534	P2774603	
	TCS12 D-649	P2774606	
	TCS12 D-862	P2774608	
	TCS12 D-97	P2774609	
TCS24D	TCS24 D-108	P2774616	
	TCS24 D-119	P2774617	
	TCS24 D-129	P2774618	
	TCS24 D-1411	P2774619	
	TCS24 D-1612	P2774620	
	TCS24 D-18145	P2774621	
	TCS24 D-649	P2774612	
TCS38D	TCS24 D-755	P2774613	
	TCS24 D-862	P2774614	
	TCS24 D-97	P2774615	
	TCS38 D-1612	P2774625	
	TCS38 D-18145	P2774626	
	TCS38 D-2016	P2774627	
	TCS38 D-2218	P2774628	
TCS38 D-2822	P2774630		

NC DRILL CHUCK NPU
K - STRAIGHT


TAPER No.	MODEL No.	EDP No.	PRICE
32	K32-NPU13-100	P2775252	

- Feature : Quick Change Type with Built-in Torque Safety Device
► For Pipe Type Tap, please discuss separately.

MORSE TAPER ARBOR
MTA
SK - DIN 69871


TAPER No.	MODEL No.	EDP No.	PRICE
40	SK40-MTA1-50 G6.3	P2522004	
	SK40-MTA2-50 G6.3	P2522005	
	SK40-MTA3-70 G6.3	P2522006	
	SK40-MTA4-95 G6.3	P2522007	
50	SK50-MTA2-60 G6.3	P2522009	
	SK50-MTA3-65 G6.3	P2522010	
	SK50-MTA4-95 G6.3	P2522011	
	SK50-MTA5-105 G6.3	P2522012	

HSK FORM A - ISO 12164-1/DIN 69893


TAPER No.	MODEL No.	EDP No.	PRICE
100A	HSK100A-MTA1-110 G6.3	P2565011	

BT - JIS B6339/MAS 403


TAPER No.	MODEL No.	EDP No.	PRICE
30	BT30-MTA2-60 G6.3	P2542002	
	BT40-MTA1-45 G6.3	P2542005	
40	BT40-MTA2-60 G6.3	P2542013	
	BT40-MTA3-75 G6.3	P2542014	
	BT40-MTA4-95 G6.3	P2542007	
	BT50-MTA1-120 G6.3	P2542017	
50	BT50-MTA3-150 G6.3	P2542022	
	BT50-MTA3-45 G6.3	P2542021	
	BT50-MTA4-105 G6.3	P2542024	
	BT50-MTA4-180 G6.3	P2542025	
	BT50-MTA4-75 G6.3	P2542023	

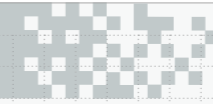
PULL STUD BOLT
PSB


MODEL No.	EDP No.	PRICE
PS-0	P2506706	
PS-1	P2775051	
PS-1H	P2506701	
PS-2	P2775052	
PS-2H	P2506702	
PS-5	P2775053	
PS-5H	P2506704	
PS-6	P2775054	
PSS-1	P2506707	
PSS-1H	P2775096	
PSS-5	P2506708	
PSS-5H	P2775086	
PS-806	P2775102	
PS-G51	P2775060	

COOLANT TUBE
CT


TAPER No.	EDP No.	PRICE
63A	P2775081	
100A	P2775082	

▶ Coolant Tube for HSK

MEMO




HIGH QUALITY PRODUCTS and ON TIME DELIVERY for WORLD-WIDE CUSTOMERS

Since 1982, YG-1 has been committed to quality, innovation and the unique customer experience. Our performance and experience have granted YG-1 the global impression of one of the leading manufacturers of high quality cutting tool solutions. This global footprint expands over 75 countries, with international logistic centers, pledging to our customers to give the best service available today - and tomorrow.

EUROPE



ASIA PACIFIC



AMERICAS



AFRICA



YG-1 CO., LTD.

* For more information on sales network, please contact the head office as below;

YG-1 EUROPE

Parc de l'Esplanade BAT. B1, 1, Rue Enrico
Fermi 77400 St. Thibault des Vignes France
Phone: +33-172-84-4070
Email: yg1@yg1.eu
www.yg1.kr

YG-1 CO., LTD.

YG-1 EUROPE

Parc de l'Esplanade BAT. B1, 1, Rue Enrico
Fermi 77400 St. Thibault des Vignes France

Phone: +33-172-84-4070

Email: yg1@yg1.eu

www.yg1.kr

Note The information is provided for reference only. Tool specifications are subject to change without prior notice.
Although we endeavor to supply accurate and timely information, there can be no guarantee to cover every particular application.
YG-1 or publishers are not liable for any damage for use of the information.



QUICK-SEARCH
YG-1 PRODUCTS!!
www.yg1.kr



Search 'YG-1' on social media outlets

YG1YEBT230210003